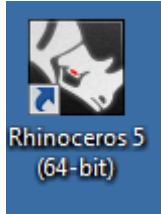


Activate the Rhino program.



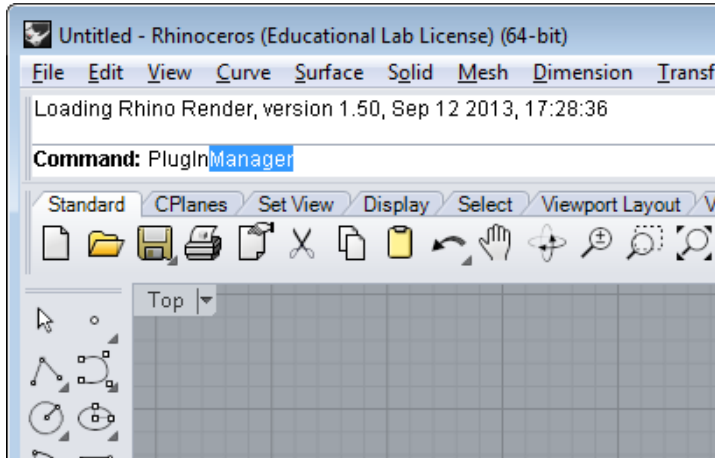
Wait while the program continues setting-up the workspace...



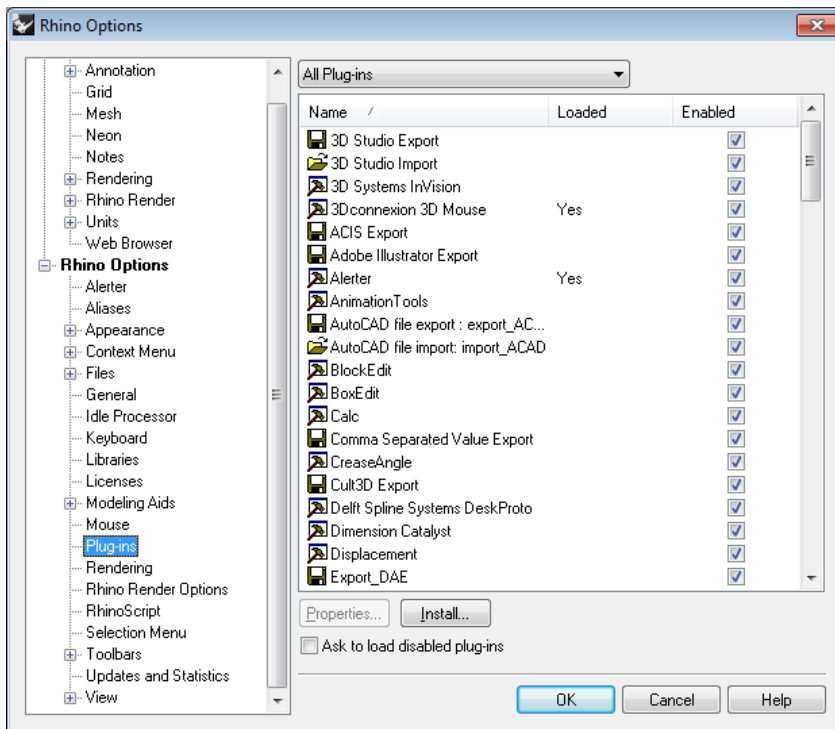
Click the **OK** button to get through this menu.



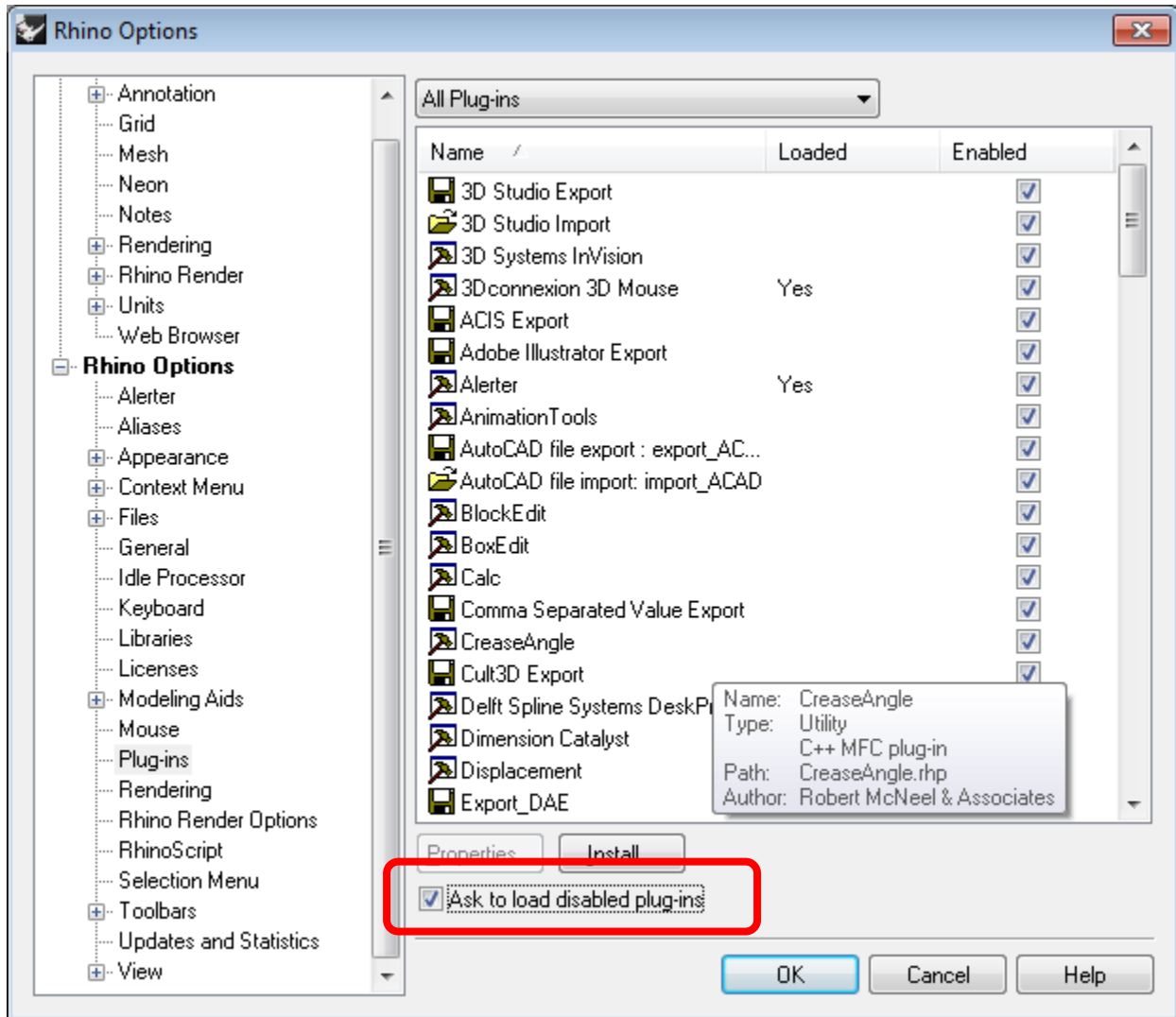
Type the command “**PlugInManager**”:



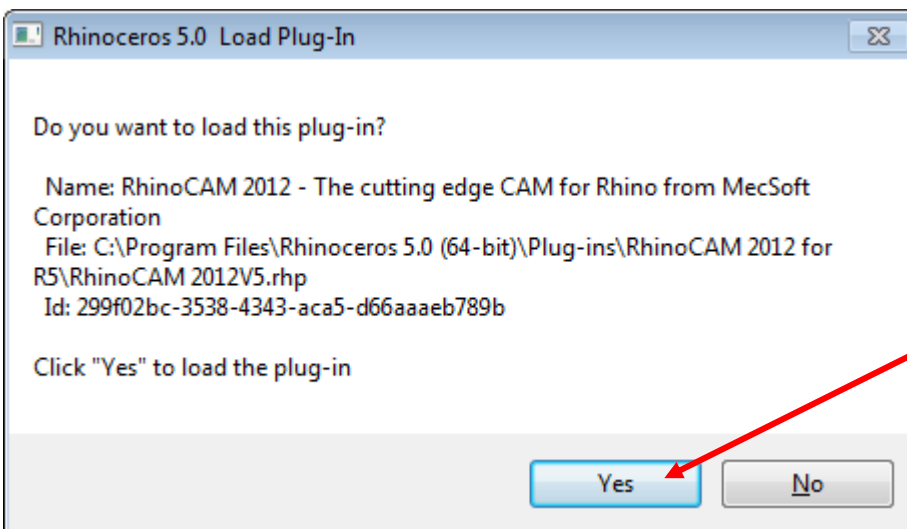
This will bring up the **Plug-ins** tab in the **Rhino Options** menu.



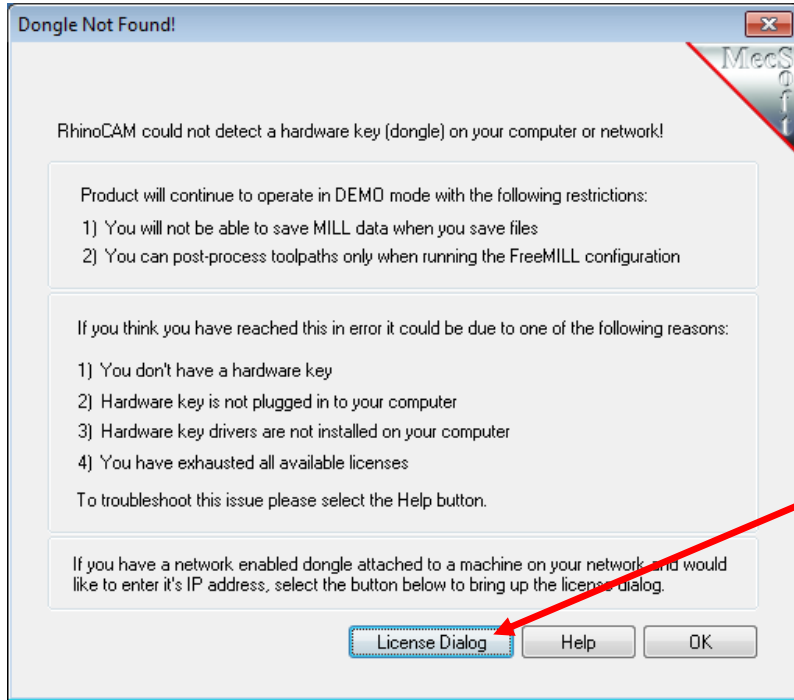
Click the checkbox for “Ask to load disabled plugins”.



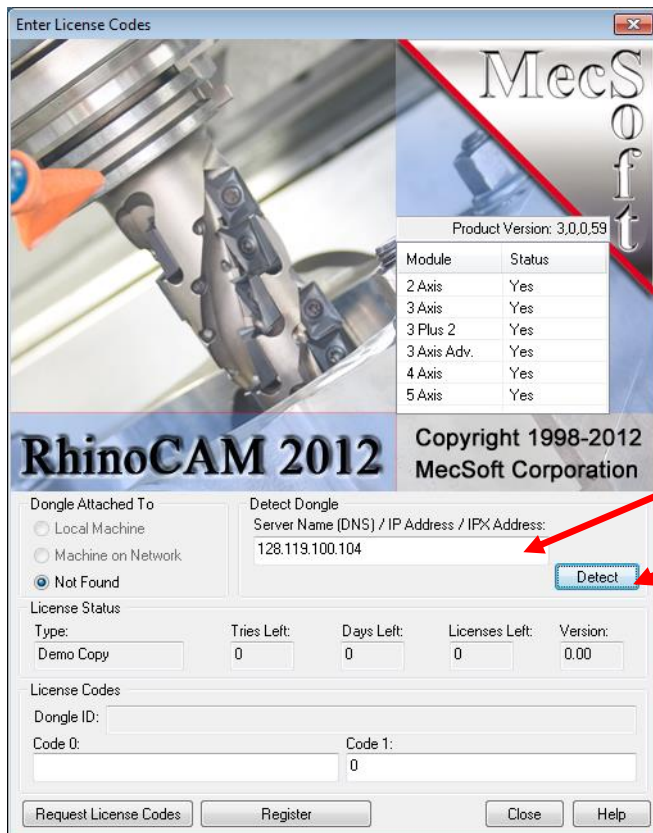
Now **close Rhinoceros** and **re-open** it. You will get this dialog box from now on on this computer. Click **Yes** to run RhinoCAM.



Click the **License Dialog** button.



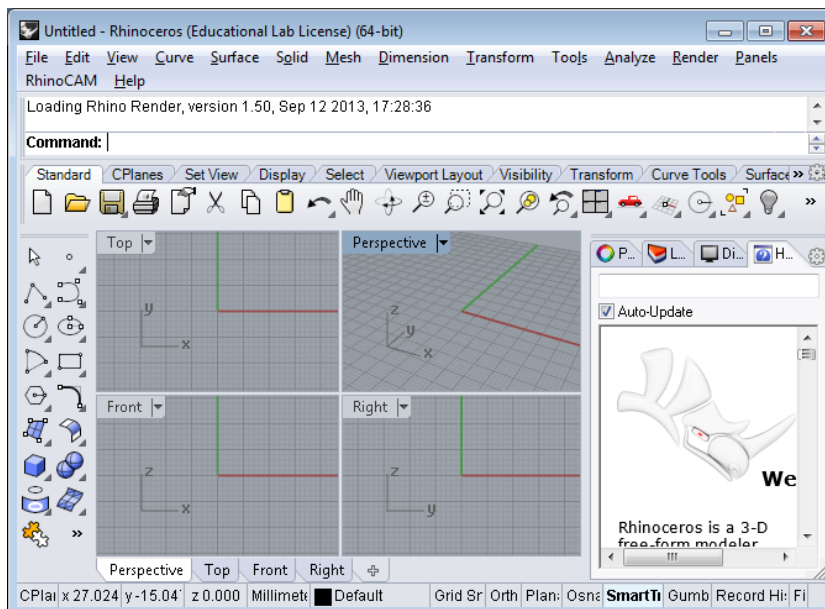
Enter the *Server Address*: **128.119.100.104** and click the **Detect** Button.



After a few seconds, the menu will change and display the access codes from the server. Click the **Close** button.



After a few more seconds, the workspace will open and you can begin work.



If you return to a computer you have used recently, the settings may have been retained and you would not need to repeat these steps.